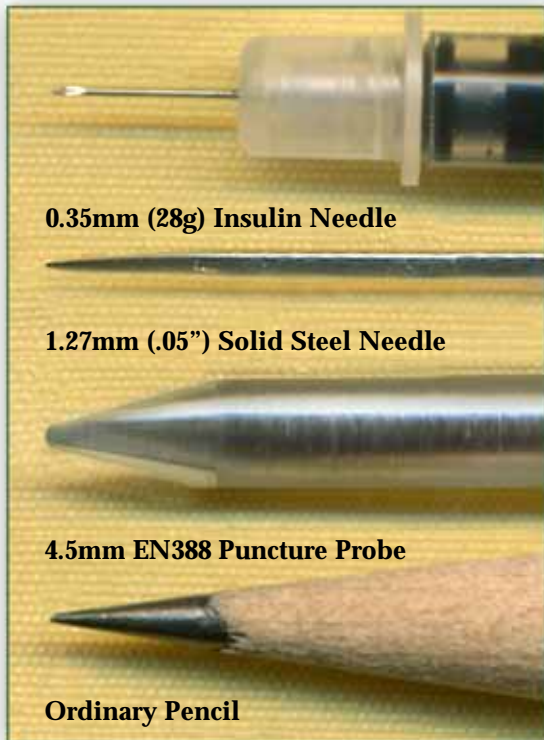


Not All Tests Are Created Equal

Currently no standardized needle tests exist for gloves, as hypodermic needles bend and are hard to test. The large puncture probe used for CE Mechanical Risk EN388 covers threats like nails but not needles, glass slivers, or metal shards. To prove TurtleSkin's effectiveness against these threats, we modified EN388 in our ISO-9001 certified lab using a 1.27mm hardened steel probe. This sharp, fine-tipped probe provides consistent, repeatable results and demonstrates TurtleSkin's excellent needle protection.



Warwick Mills produces high-performance composite materials for the aerospace, industrial, and recreational markets. You'll find Warwick's products where quality, durability, and performance matter most.

NASA's First Choice



You don't get second chances on missions to Mars. That's why NASA chose Warwick to develop the fabric in the crash bags for the three successful Mars missions: *Pathfinder*, *Spirit*, and *Opportunity*.

Warwick Mills
301 Turnpike Road P.O. Box 409
New Ipswich, NH 03071
+1.603.878.1565
inquiries@warwickmills.com

www.turtleskin.com

Finally ... Gloves with Puncture & Cut Protection

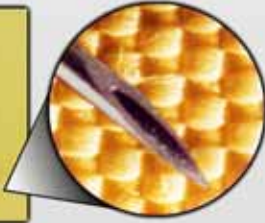
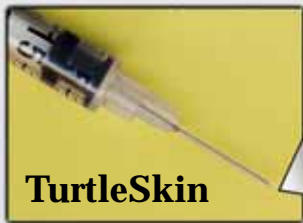


TURTLESKIN®
Gloves

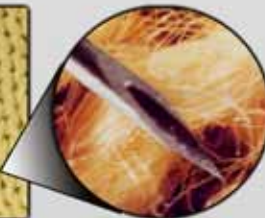


Finally ... Gloves that Deliver Puncture & Cut Protection

***Tightest Weave Ever
In an Aramid Fiber***



Magnified view shows how TurtleSkin's patented weave interlocks aramid fibers so tightly, they don't shift or leave gaps for fine penetrators to slide past.



Magnified view of standard cut-resistant glove shows how gaps between aramid fibers can't stop punctures, letting fine penetrators like needles, glass fragments, and metal shards slip past.

TurtleSkin WorkWear



Soft, snug, and dexterous, a supple leather palm work glove. Puncture protection in the palmar surfaces including fingers. First choice of custodial workers. XS - XXL

TurtleSkin MultiGuard



Water resistant glove provides the highest level of needle and cut protection on the market today. Excellent choice for plumbers, heavy work, limited visibility, and high risk of needle stick. M-XXL

TurtleSkin Utility



Rugged work glove that provides high cut and puncture protection. Washable leather. Protection in palmar surfaces and finger tips. Softens with use. Laundry, metal handling, transportation, custodial. XS-XXL

TurtleSkin FullCoverage



Dexterous protection for the entire hand from cut and puncture. Available in two protection levels. Suitable as a liner. Custodial, light industrial, assembly, animal treatment. XS - XXL

TurtleSkin Insider



A soft cotton liner offers puncture and cut protection on all palmar surfaces. Favored by electrical component assemblers. S - XL

TurtleSkin SevereGear



A dexterous glove that provides excellent puncture protection on palmar surfaces and cut protection over the entire glove. Used in glass handling, sheet metal assembly, waste sorting. XS - XXL

TurtleSkin String Knits



Knit gloves offer protection and comfort. Available in two levels of protection. Added puncture protection in palmar areas. Used in general industrial, glass handling, food processing. M - XL

TurtleSkin Sleeves



Excellent cut and puncture protection for wrist and forearm areas. Used in general industry, nuclear waste handling, glass industry, and veterinary services. S - XL

TurtleSkin SafeHandler



A dotted string knit glove that provides good grip and puncture protection to palms and cut protection to the entire glove. Favored by the glass and sheet metal industries. L